



# Certificate of Analysis

## CANNABUSINESS LABORATORIES, LLC

### Customer:

Vapen Ky, LLC  
710 Kentucky Ave  
Fulton, KY 42041  
P-2541

Received Date **4/15/2026**  
Collection Date **4/14/2026**  
COA Released **4/23/2026**  
Comments

Sample ID **260414015**  
Order Number **CB260414006**  
Sample Name **Hempy Endings Gummies**  
External Sample ID **Hempy Ending Gummy**  
Batch Number **HE-Gummies041426**  
Product Type **Edible**  
Sample Type **Edible**

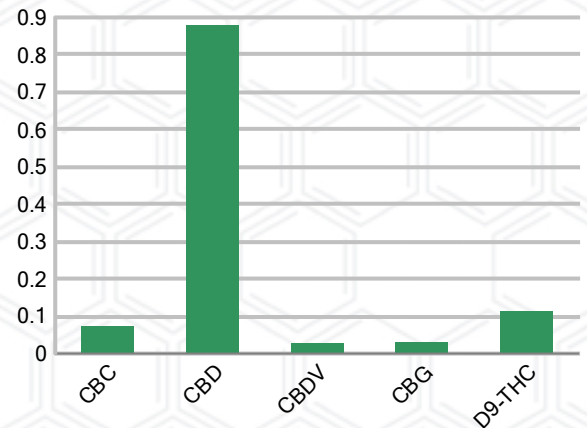
### CANNABINOID PROFILE (Product Size = 8.3 g)

Analyte	LOQ (%)	% Weight	mg/g	mg/serving
CBC	0.01	0.073	0.733	6.08
CBD	0.01	0.880	8.797	73.02
CBDa	0.01	ND	ND	ND
CBDV	0.01	0.029	0.290	2.41
CBG	0.01	0.031	0.309	2.56
CBGa	0.01	ND	ND	ND
CBN	0.01	ND	ND	ND
d8-THC	0.01	ND	ND	ND
d9-THC	0.01	0.115	1.151	9.55
THCa	0.01	ND	ND	ND
THCV	0.01	ND	ND	ND
<b>Total Cannabinoids</b>		<b>1.128</b>	<b>11.28</b>	<b>93.62</b>
<b>Total Potential THC</b>		<b>0.115</b>	<b>1.151</b>	<b>9.55</b>
<b>Total Potential CBD</b>		<b>0.880</b>	<b>8.797</b>	<b>73.02</b>
<b>Total Potential CBG</b>		<b>0.031</b>	<b>0.309</b>	<b>2.56</b>
<b>Ratio of Total Potential CBD to Total Potential THC</b>				<b>7.65 : 1</b>
<b>Ratio of Total Potential CBG to Total Potential THC</b>				<b>0.27 : 1</b>

### SAMPLE IMAGE



### CANNABINOIDS % Weight



\*Total Cannabinoids refers to the sum of all cannabinoids detected.

\*Total Potential CBD = (0.877 x CBDa) + CBD. \*Total Potential THC = (0.877 x THCa) + THC. \*Total Potential CBG = (0.877 x CBGa) + CBG.

\*Total Potential THC/CBD are calculated to take into account the loss of an acid group during decarboxylation.



*J. Hobgood*  
Laboratory Manager

SIGNATURE

Jamie Hobgood

LABORATORY MANAGER

04/23/2026 11:22 AM

DATE

This product has been tested by CannaBusiness Laboratories using validated testing methodologies and a quality system. Values reported relate only to the product tested. CannaBusiness Laboratories makes no claims as to the efficacy, safety, or other risks associated with any detected or non-detected levels of any compounds reported herein. This Certificate shall not be reproduced except in full, without the written permission of CannaBusiness Laboratories. Photo is of sample received by the lab and may vary from final packaging. The results apply to the sample as received.



# Certificate of Analysis

## CANNABUSINESS LABORATORIES, LLC

### Customer

Vapen Kv, LLC  
710 Kentucky Ave  
Fulton, KY 42041  
P-2541



Overall Batch Results	
Potency (mg/g)	

**Sample Name:** Hempy Endings Gummies  
**Sample ID:** 260414015  
**Order Number:** CB260414006  
**Product Type:** Edible  
**Sample Type:** Edible  
**Received Date:** 04/15/2026  
**Batch Number:** HE-Gummies041426  
**Collection Date:** 04/14/2026

**COA released:** 04/23/2026 11:22 AM

### Potency (mg/g)

Date Tested: 04/20/2026 Method: CB-SOP-028 Instrument: HPLC-PDA#1(HempAnalyzer3)

Analyte	Result	Units	LOQ	LOD	Limits	Pass / Fail
CBC (Cannabichromene)	0.073	%	0.010			
CBC (Cannabichromene) mg/g	0.733	mg/g	0.100			
CBD (Cannabidiol)	0.880	%	0.010			
CBD (Cannabidiol) mg/g	8.797	mg/g	0.100			
CBDa (Cannabidiolic Acid)	ND	%	0.010			
CBDa (Cannabidiolic Acid) mg/g	ND	mg/g	0.100			
CBDV (Cannabidivarin)	0.029	%	0.010			
CBDV (Cannabidivarin) mg/g	0.290	mg/g	0.100			
CBG (Cannabigerol)	0.031	%	0.010			
CBG (Cannabigerol) mg/g	0.309	mg/g	0.100			
CBGa (Cannabigerolic Acid)	ND	%	0.010			
CBGa (Cannabigerolic Acid) mg/g	ND	mg/g	0.100			
CBN (Cannabinol)	ND	%	0.010			
CBN (Cannabinol) mg/g	ND	mg/g	0.100			
D8-THC (D8-Tetrahydrocannabinol)	ND	%	0.010			
D8-THC (D8-Tetrahydrocannabinol) mg/g	ND	mg/g	0.100			
D9-THC (D9-Tetrahydrocannabinol)	0.115	%	0.010			
D9-THC (D9-Tetrahydrocannabinol) mg/g	1.151	mg/g	0.100			
THCa (Tetrahydrocannabinolic Acid)	ND	%	0.010			
THCa (Tetrahydrocannabinolic Acid) mg/g	ND	mg/g	0.100			
THCV (Tetrahydrocannabivarin)	ND	%	0.010			
THCV (Tetrahydrocannabivarin) mg/g	ND	mg/g	0.100			



*J. Hobgood*  
Laboratory Manager

SIGNATURE

Jamie Hobgood

04/23/2026 11:22 AM

DATE

M of U = Measurement, NT = Not tested, ND = Not detected; LOQ = Limit of Quantitation; <LOQ = Detected; >ULOL = Above upper limit of linearity; CFU/g = Colony forming units per 1 gram; TNTC = Too numerous to count

This product has been tested by CannaBusiness Laboratories using validated testing methodologies and a quality system. Values reported relate only to the product tested. CannaBusiness Laboratories makes no claims as to the efficacy, safety, or other risks associated with any detected or non-detected levels of any compounds reported herein. This Certificate shall not be reproduced except in full, without the written permission of CannaBusiness Laboratories. Photo is of sample received by the lab and may vary from final packaging. The results apply to the sample as received.